

CASA CELÍA

c o u t u r e

CASA  
CELE  
A



GS 1.725.000

CASA  
CELEA



GS 1.725.000

CASACABELLA



GS 1.395.000

CASA  
CELESTIA



GS 1.725.000

CASA  
CELEIA



GS 1.395.000

CASA  
S  
A  
C  
E  
L  
L  
A



GS 1.095.000

CASA  
CELEA



GS 1.250.000

CASA  
S  
A  
C  
E  
L  
L  
A



GS 1.475.000

CASA  
FELIA  
CASA  
FELIA  
CASA  
FELIA  
CASA  
FELIA



GS 1.725.000

COSSA  
CELLIA



GS 1.095.000

CASA  
S  
A  
C  
E  
L  
L  
A



GS 1.250.000

COSSACELLA



GS 750.000



GS 885.000

CASA  
CELELIA



GS 975.000

CASA BELLA



GS 980.000

CASA  
GELIA  
CO  
SA  
A  
S  
A  
C  
O  
S  
A  
G  
E  
L  
I  
A



GS 1.325.000



GS 975.000

CASA BELLA



GS 725.000



CLASSIC



GS 775.000

CASA  
FELIA  
CASA  
SASA  
CASA



GS 850.000

CASA COLLETTA



GS 775.000

CASA  
COLELLA



GS 775.000



GS 1.375.000



CASA  
FELIA  
COLLA



GS 1.375.000

CASA  
FELIA

GS 925.000





GS 795.000



GS 645.000



GS 1.375.000

CASA  
S  
A  
C  
E  
L  
L  
A



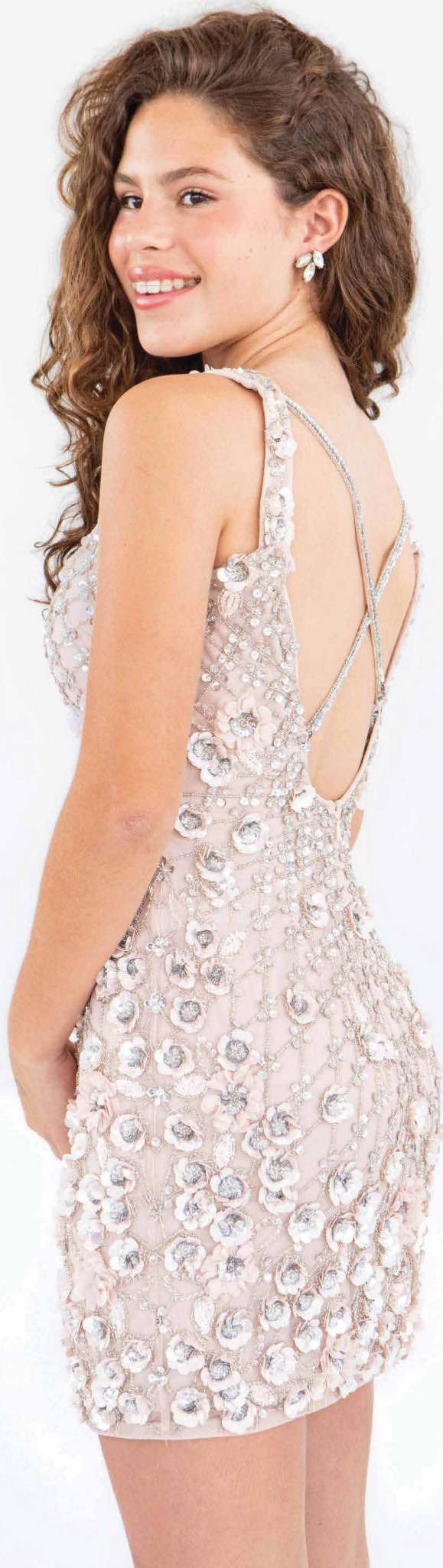
GS 575.000

CASA  
COLLETTA



GS 1.150.000

CASA  
COLLEA



GS 2.225.000



CASA CRELLA



GS 1.375.000

CASA  
FELIA  
COLLA  
S  
A  
C  
A  
S  
A

GS 1.375.000





CASA  
COLELLA



GS 1.375.000

ACCESORIOS

*accessorios*

A close-up photograph of a woman's midsection. She is wearing a vibrant pink, form-fitting dress. A thin, silver-toned belt with a large, multi-faceted diamond brooch is cinched at her waist. In her right hand, she holds a rectangular clutch bag covered in a dense grid of small, clear crystals. A large, pear-shaped diamond is attached to the top of the bag. The background is a plain, light-colored wall.

GS 200.000

GS 350.000

A close-up photograph of a woman's midsection and hand. She is wearing a vibrant red, textured dress. A gold-colored belt with a large, multi-faceted diamond brooch is cinched at her waist. The brooch is shaped like a butterfly or a fan of leaves, with numerous clear, faceted stones. In her right hand, she holds a rectangular clutch bag made of a gold mesh material. The bag has a gold-colored metal frame and a small, ornate clasp. The background is a plain, light-colored wall.

GS 200.000

GS 350.000

CASA CELÍA

c o u t u r e